

Installation guide

PVS-APK-M control unit table stand and wireless communication kit for PVS300 string inverters

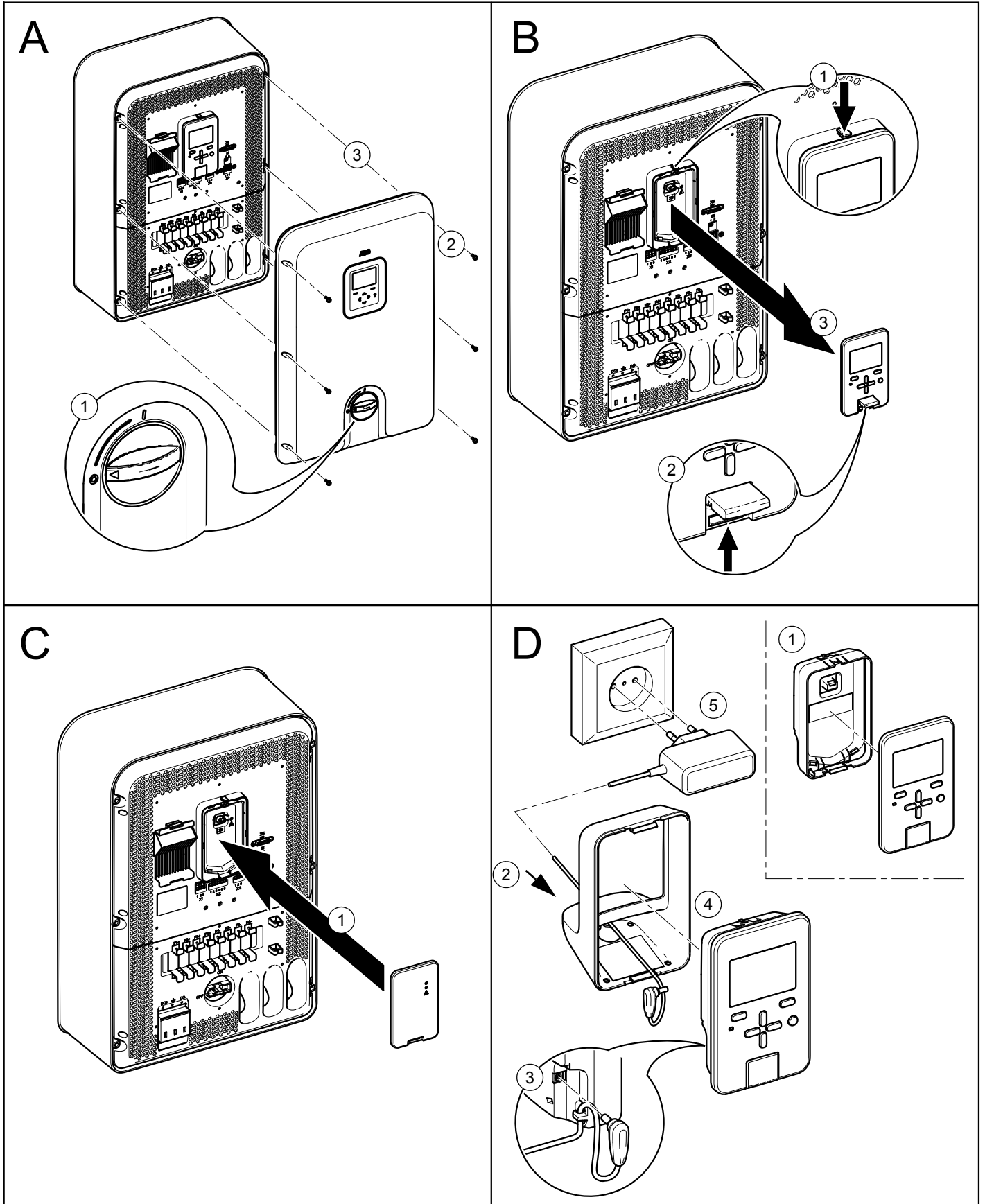


Table 1 - Transceiver LEDs

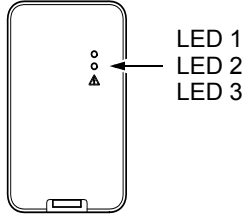
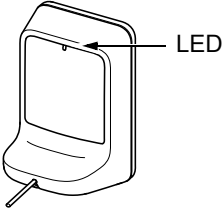
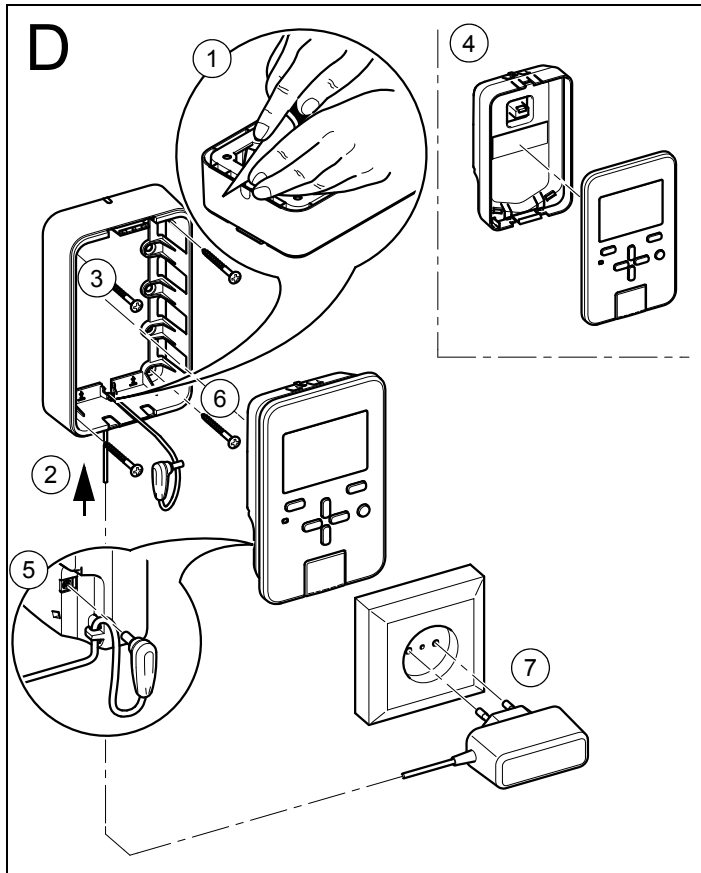
| LED 1 | | Information |  |
|-------|-----------------------|--------------------------------------------------|-------------------------------------------------------------------------------------|
| ● | Wireless link status | Table 2 | |
| LED 2 | | Information | |
| ● | Inverter status | PVS300 product manual (3AUA0000096321 [English]) | |
| LED 3 | | Information | |
| △ | Inverter ground fault | PVS300 product manual (3AUA0000096321 [English]) | |

Table 2 - Wireless link status LED

| Indication | Status |  |
|--------------|-------------------------------|-------------------------------------------------------------------------------------|
| ○ (Off) | Power off | |
| ● (Flashing) | Finding wireless link | |
| ● (On) | Wireless link ok, operational | |

Addendum - Combination of kits PVS-APK-M and PVS-APK-F



- Use the transceiver only with the power supply unit delivered.
- Ambient conditions:
 - for indoor use only (pollution degree 2)
 - temperature 0...40 °C (104 °F)
 - relative humidity 0...95% (not condensing)
 - altitude < 2000 m (6562 ft)
 - degree of protection IP20
- Ignoring these instructions may lead to impairment of the provided protection.

Description of labels



Refer to the installation guide.